

DeepEye™ EVS100

2D Video Endoscopy System



- ✓ Fog-Proof Function
- ✓ Excellent Image Quality
 - Full HD (1920*1080P)
 - Advanced optical imaging technology
 - Image enhancement algorithm
 - Digital zoom: 1X~3X
- ✓ Integrated Design
 - Built-in video recording and picture capturing
 - Built-in light source, no external light source and fiber cable
 - All system functions are controlled with the laparoscope handle



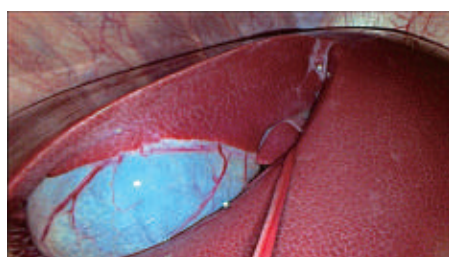
CE NMPA FDA

Catch What You've Missed

DeepEye™ 2D Video Endoscopy System provides world-leading compact and portable system with Fog-proof Capability. Thanks to its integrated design, the system brings more operation convenience, OR space-saving, and lower maintenance cost

Specification of DeepEye™ - Processor

Iteam	Specification
Resolution	1920x1080P Full HD
Video output port	2X Display Port, 1X HDMI, 2X DVI-D
Control port	2X USB for keyboard and mouse, 1X Ethernet
Video export port	Export recorded video from Processor USB Drive
Built-in storage	Up to 100 hours Full HD video clips
Frame rate	60 frames per second

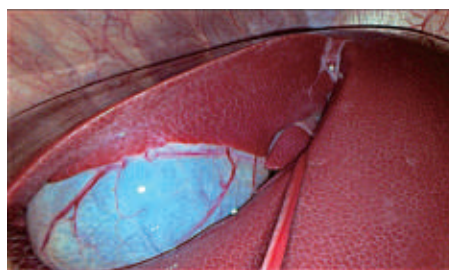


Ultraclear view with DeepEye™ Fog-proof Function

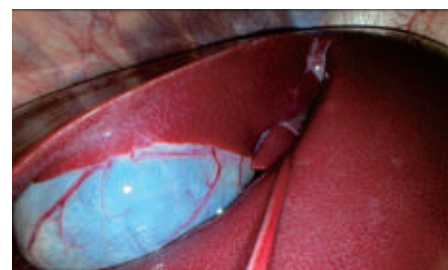


Conventional Laparoscope

Unique Image Enhancement Algorithm



The image taken with Surgnova unique image enhancement algorithm



Conventional Laparoscope



Specification of DeepEye™ - Endoscope

Iteam	LPG21000	LPG21030
Outer diameter	10mm	10mm
Working length	345.5mm	345.5mm
Direction of view	0°	30°
Field of view	91°(Diagonal)	85°(Diagonal)
Depth of field	20mm-120mm	20mm-120mm
Sterilization	Autoclavable	Autoclavable