

# Patient Monitor

P22/P18/P15/P12



Powerful | Pioneer | Practical

- ✓ Diagnostic gases CO<sub>2</sub>, O<sub>2</sub>, AG
- ✓ Respiratory Mechanics RM
- ✓ Pulse Oximetry SpO<sub>2</sub>
- ✓ CNS Activity Monitoring BIS, EEG, rSO<sub>2</sub>
- ✓ Cardiac Monitoring 12 Lead ECG, ARR/ST, QT/QTc
- ✓ Monitoring NMT, TOF Neuromuscular Transmission



## P1

### Patient-first

Urgent care   Mobile care   Continuous care



Screen	5.5 inch touch screen
Weight	<0.9kg
Battery	8 hours continuous operation
Resolution	1280*720
Build-in module	Co2
Expanded module	Masimo, Nellcor SpO <sub>2</sub> Suntech NIBP Sidestream/Mainstream CO <sub>2</sub>

	P12	P15	P18	P22
Screen(inch)	12.1	15.6	18.5	22
Resolution	1280*800	1920*1080	1920*1080	1920*1080
Modular slot	4	6	6	6
Weight	<5kg	<6kg	<7kg	<8kg

### Seamless Transport

Monitoring the patient at every point of care  
From outdoor to intra-hospital transport

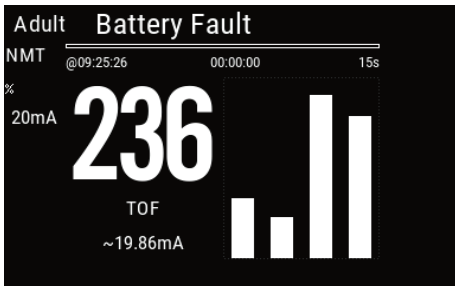
Just slide the P1 transport monitor into the patient monitor, the P series can implement the seamless transport from the outdoor, ambulance, operating room, ICU, to the recovery room.



Transfer Holder



Docking Station



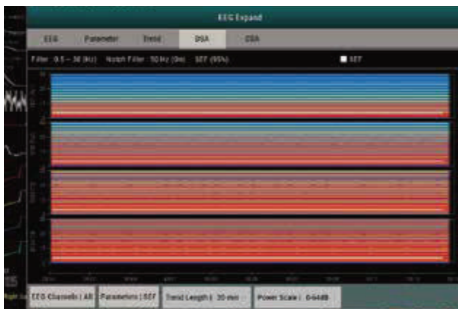
**NMT (Neuromuscular transmission)**  
NMT helps in determining the depth or neuro cerebral perfusion.



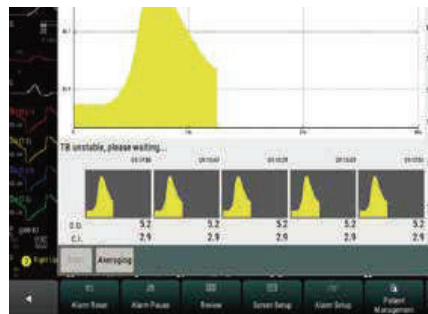
**BIS (bispectral index)**  
Used to determine the depth of sedation or hypnosis.



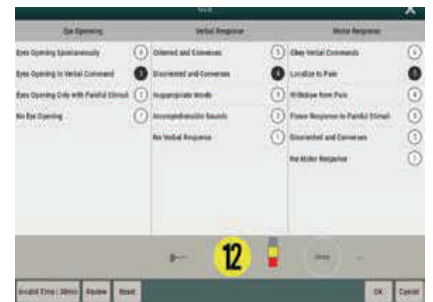
**rSO2 (regional oxygen saturation)**  
a non-invasive method of directly measuring cerebral perfusion.



**EEG (electroencephalography)**  
Used to determine changes in brain activity that assist in cerebral perfusion.



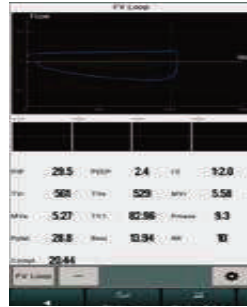
**C.O. (Cardiac Output)**  
A gold standard to monitor the critically ill patient to ensure tissue oxygenation.



**GCS (Glasgow Coma Scale)**  
Provides a practical method for assessment of conscious level in response to defined stimuli.



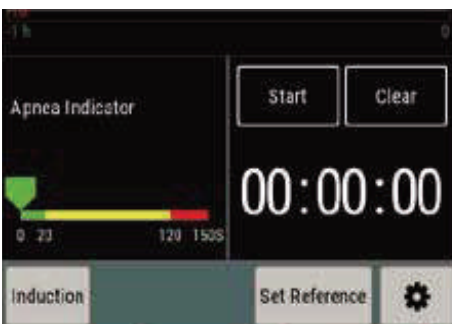
**EWS (Early Warning Score)**  
Help identify early signs of deterioration and quickly determine the degree of illness.



**RM (respiratory mechanics)**  
Help understand the ventilator/anesthesia machine operation and patient's respiratory function.



**Unique Drip Monitoring**  
Make the intravenous infusion safer



**BOA (Balance of Anesthesia)**  
Focus on relevant parameters over the course of the surgery.



**Sepsis View**  
Help to score and guide the treatment of sepsis based on the latest SSC guidelines.